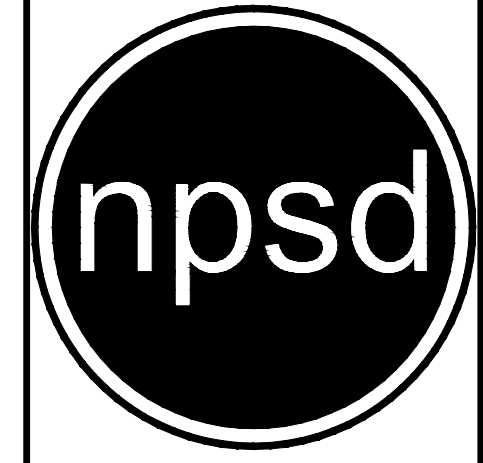


Date	Revision	Mark
04/2002	ADD SHUTOFF VALVE	△
11/2010	EJW MH FRAME	△

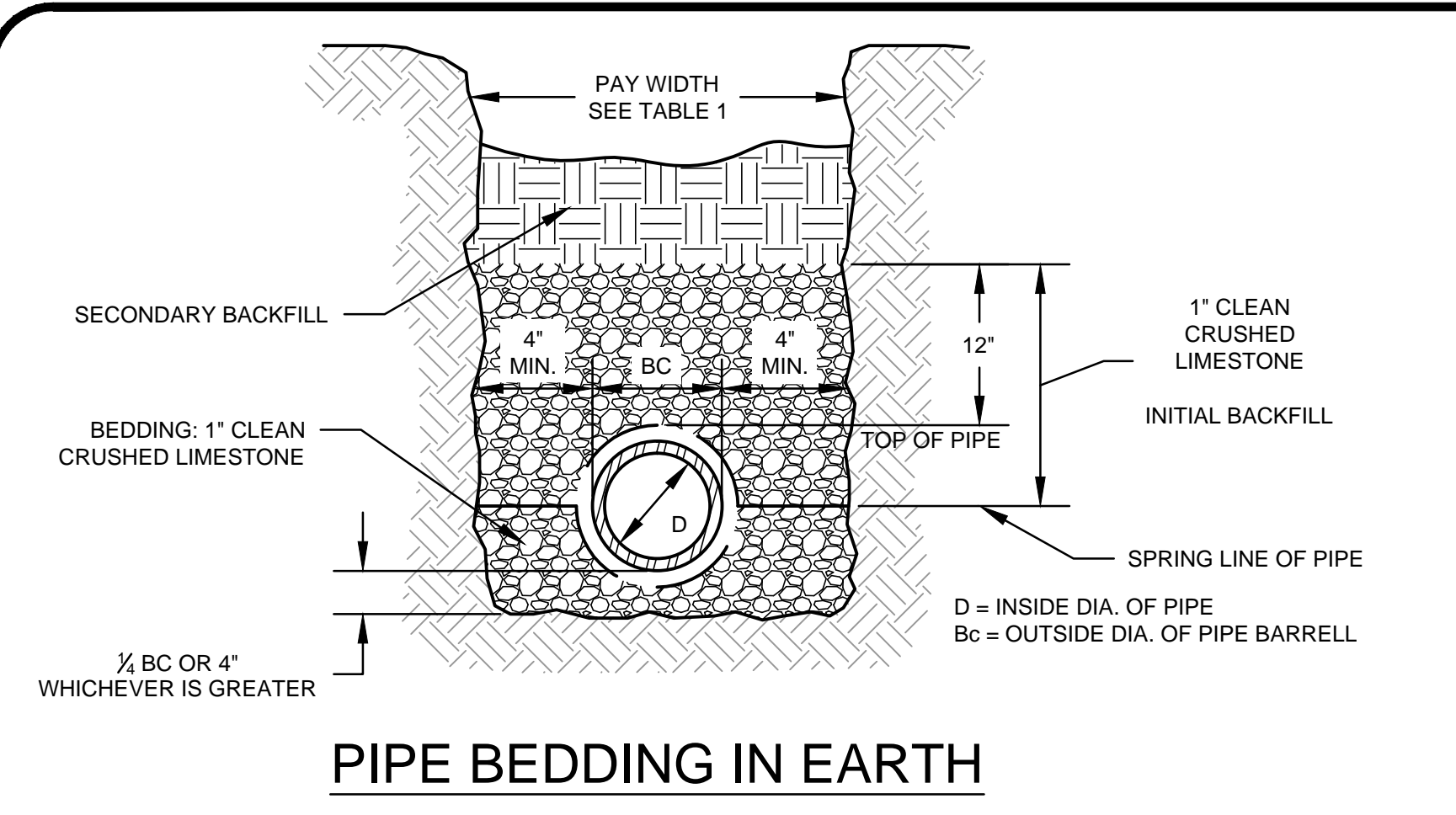
**CONSTRUCTION STANDARDS**

**NORTHEAST PUBLIC SEWER DISTRICT**  
 JEFFERSON COUNTY MISSOURI  
 1041 GRAVOIS ROAD  
 FENTON, MO 63026  
 (636) 343-5090  
 Fax (636) 343-7904  
 Email: Eng@NortheastSewer.org



APPROVED:	
DATE:	11/2010
DESIGNED BY:	TBS
DRAWN BY:	PJB
CHECKED BY:	TBS

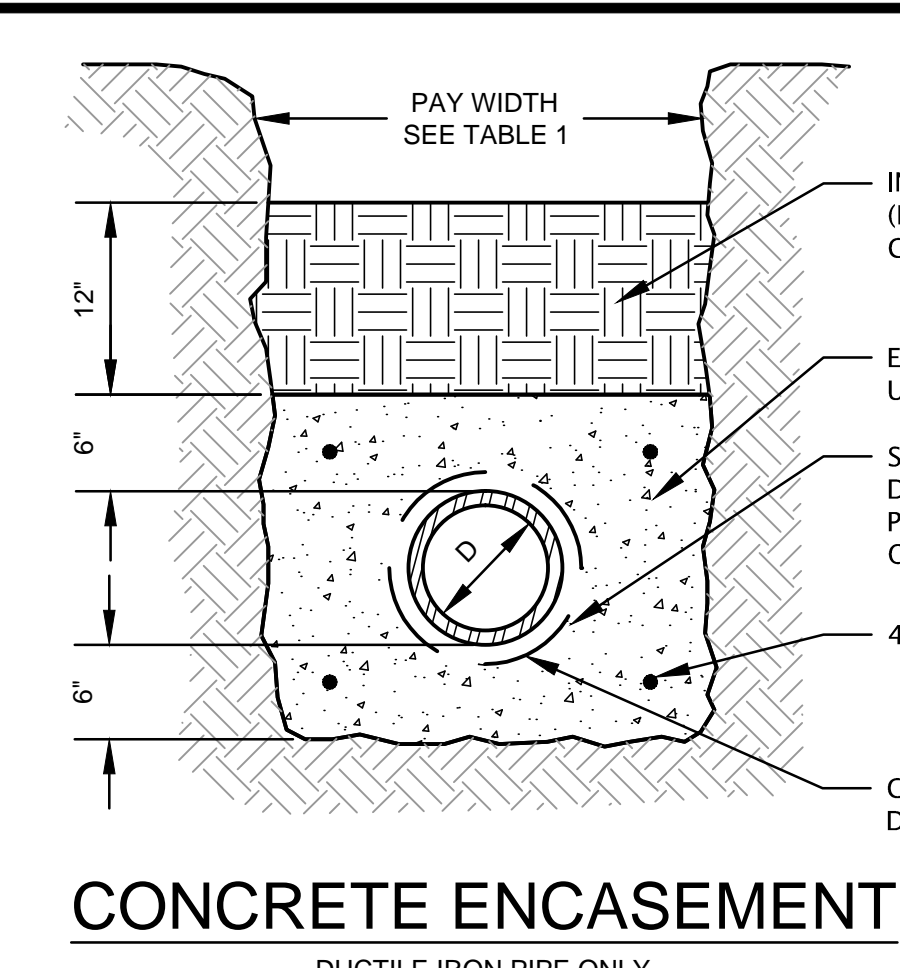
Sheet  
**1** OF **1**  
 SCALE: NTS



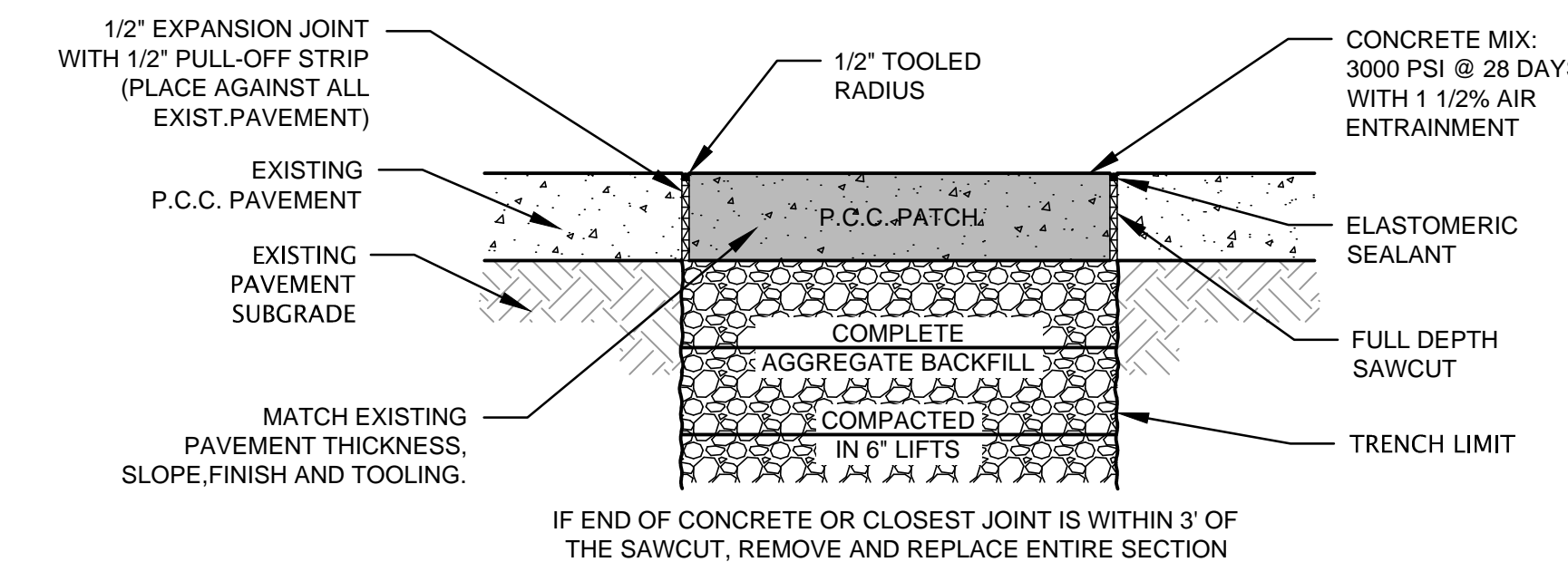
**PIPE BEDDING IN EARTH**

INSIDE DIA. OF PIPE	MINIMUM TRENCH / PAY WIDTH (INCHES)	MAXIMUM TRENCH WIDTH (INCHES)
8	24	30
10	24	30
12	24	30
15	30	36
18	36	36
24	38	42
30	44	49
36	48	55

NOTE: WHERE APPLICABLE AND NOT OTHERWISE STATED IN THE SPECIFICATIONS, THE MINIMUM TRENCH WIDTH SHOWN ABOVE SHALL BE THE PAY WIDTH FOR TRENCHING IN ROCK



**CONCRETE ENCASEMENT**



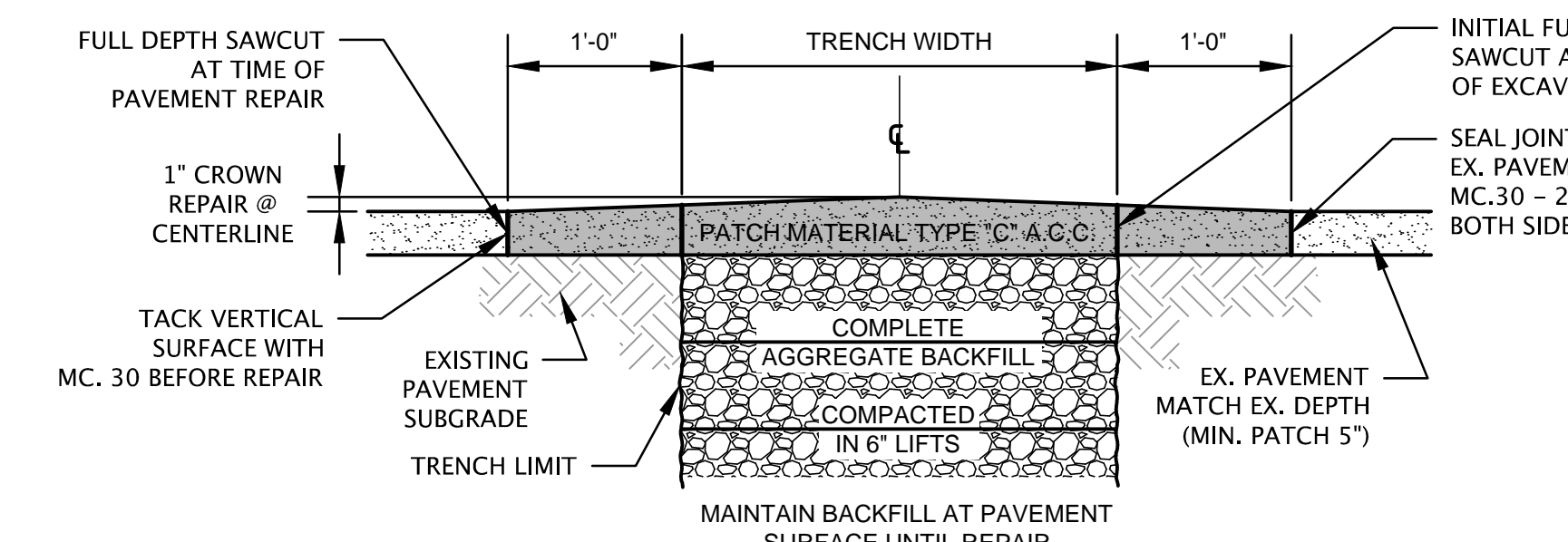
**PORTLAND CEMENT CONCRETE REPAIR**

**INITIAL BACKFILL:**  
 1" CLEAN CRUSHED LIMESTONE

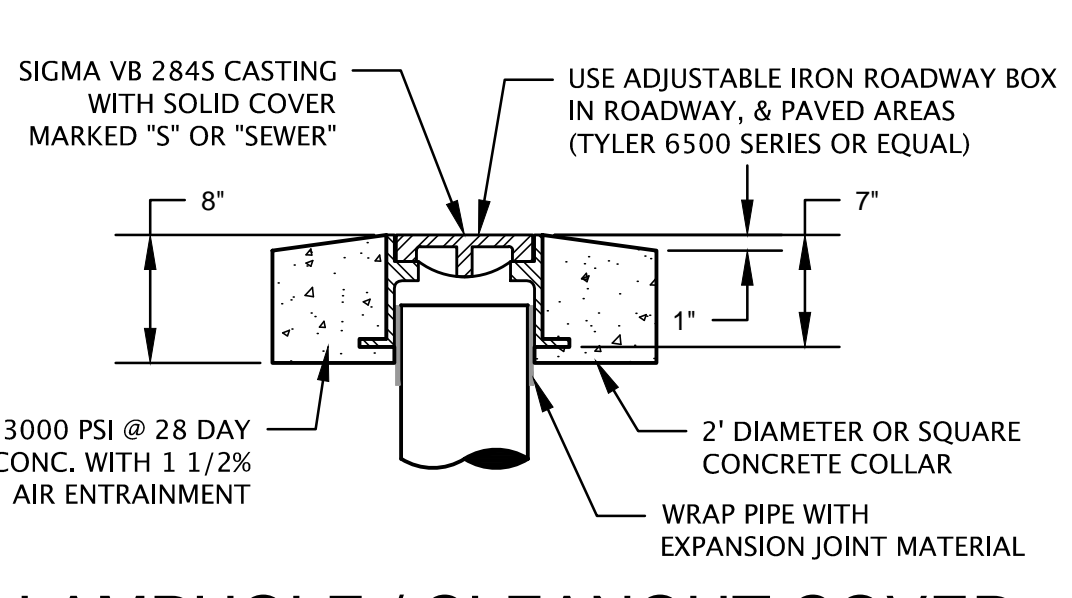
**SECONDARY BACKFILL:**  
 1.) IN PAVED AREAS, COMPLETE AGGREGATE BACKFILL WITH 1" CLEAN CRUSHED LIMESTONE.  
 2.) IN UNPAVED AREAS, CAREFULLY PLACED AND COMPACTED SELECT EARTH BACKFILL IN 6" LIFTS.

BEDDING AND PRIMARY BACKFILL SHALL BE 1" CLEAN CRUSHED LIMESTONE. AT THE CONTRACTOR'S OPTION, CRUSHED LIMESTONE HAVING THE FOLLOW GRADATION MAY BE USED.

SIeve SIZE:	% PASSING:	SIieve SIZE:	% PASSING:
1 1/2"	100%	#8	25-60%
1"	100%	#16	20-40%
1/2"	60-100%	#20	MAX. -15%
#4	40-80%		



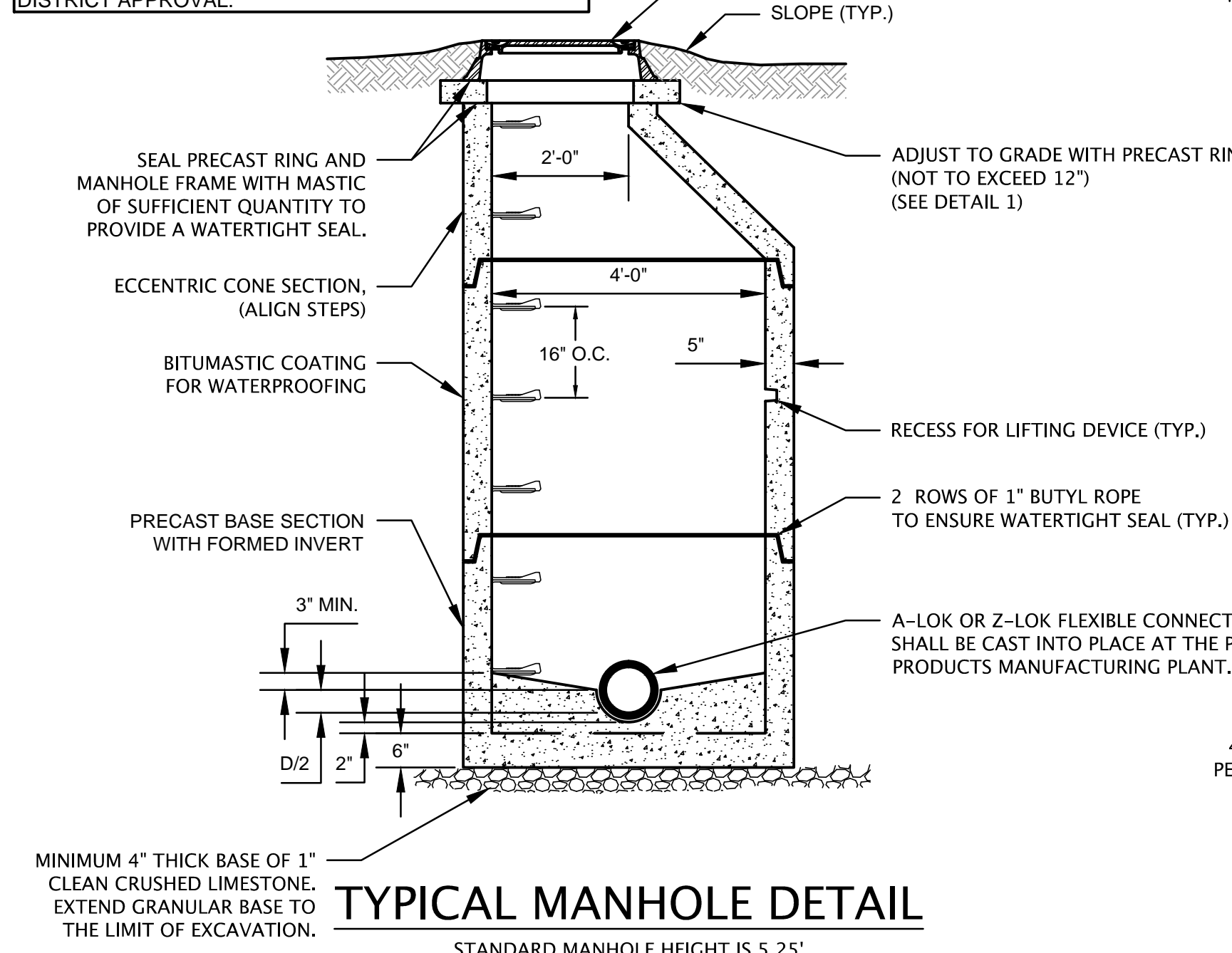
**ASPHALTIC CEMENT CONCRETE REPAIR**



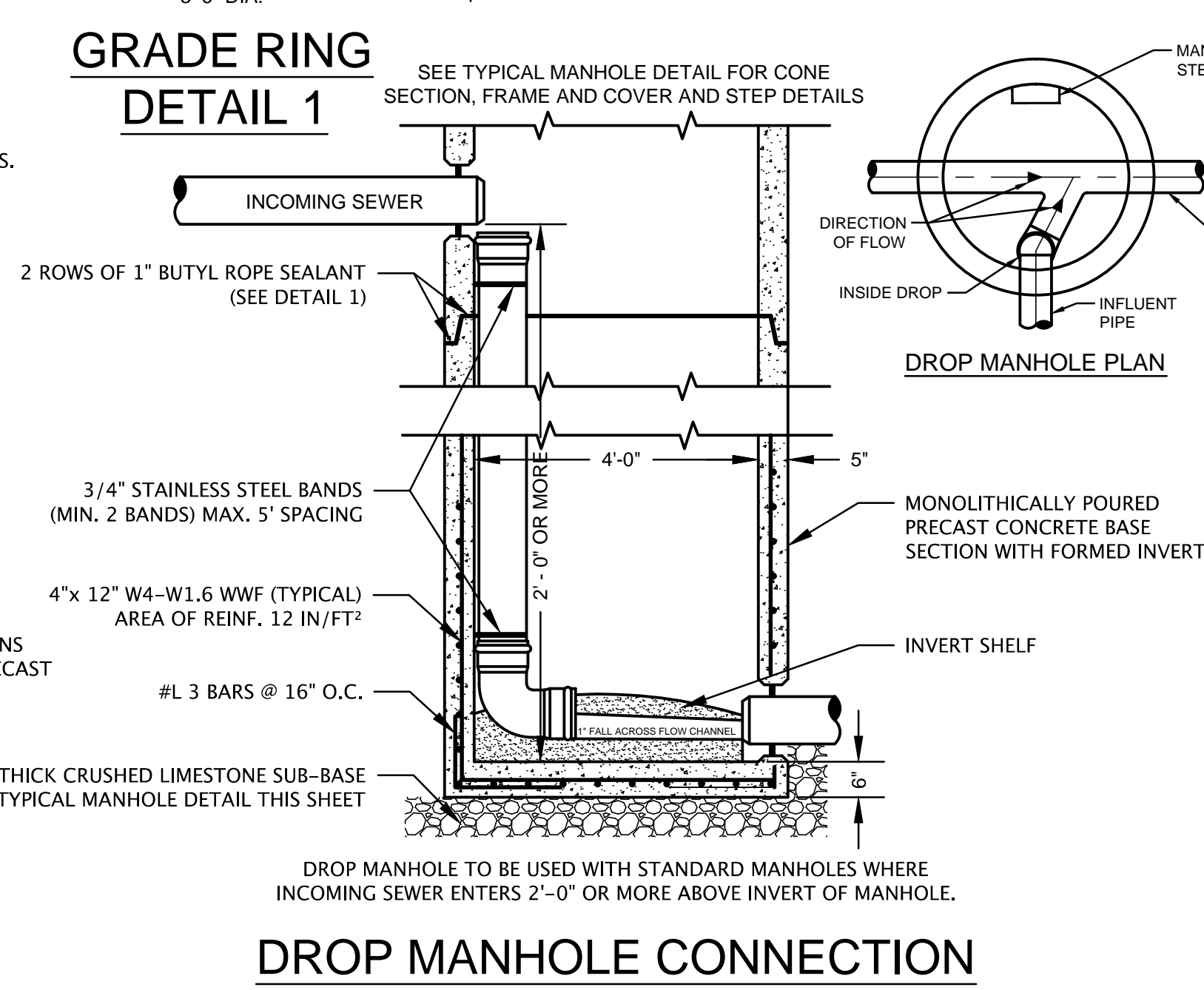
**LAMPHOLE / CLEANOUT COVER DETAIL 2**

NOTE: SDR 35 SEWERMAINS INSTALLED BETWEEN 15% AND 25% MUST HAVE CONCRETE CRADLES INSTALLED AT A MINIMUM OF EVERY 3RD JOINT. THE CRADLES MUST BE KEYPED IN EACH DIRECTION A MINIMUM OF 24" INTO UNDISTURBED SOIL PERPENDICULAR TO THE TRENCH LINE.

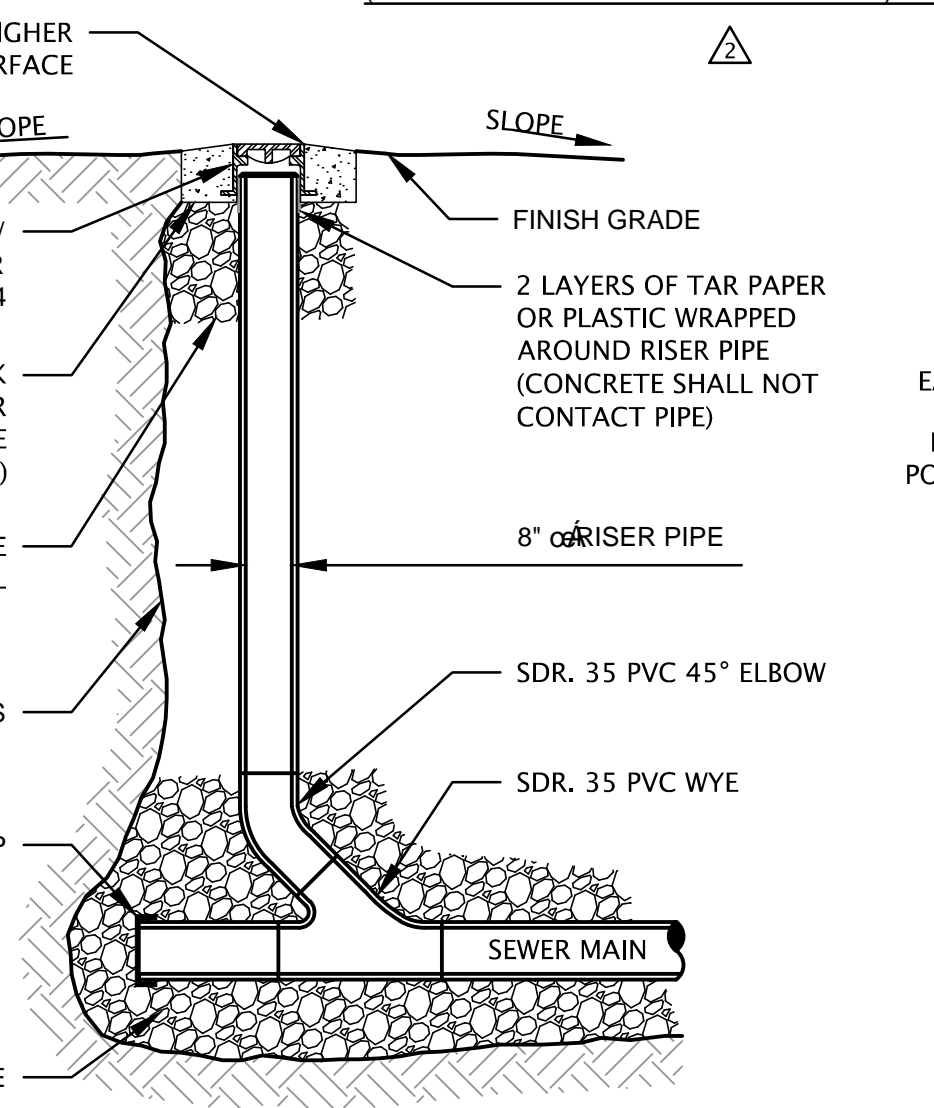
RESTRAINT JOINT PIPE MAY BE USED AS AN ALTERNATIVE.  
 NO SEWEMAIN GRADE SHALL EXCEED 25% WITHOUT DISTRICT APPROVAL.



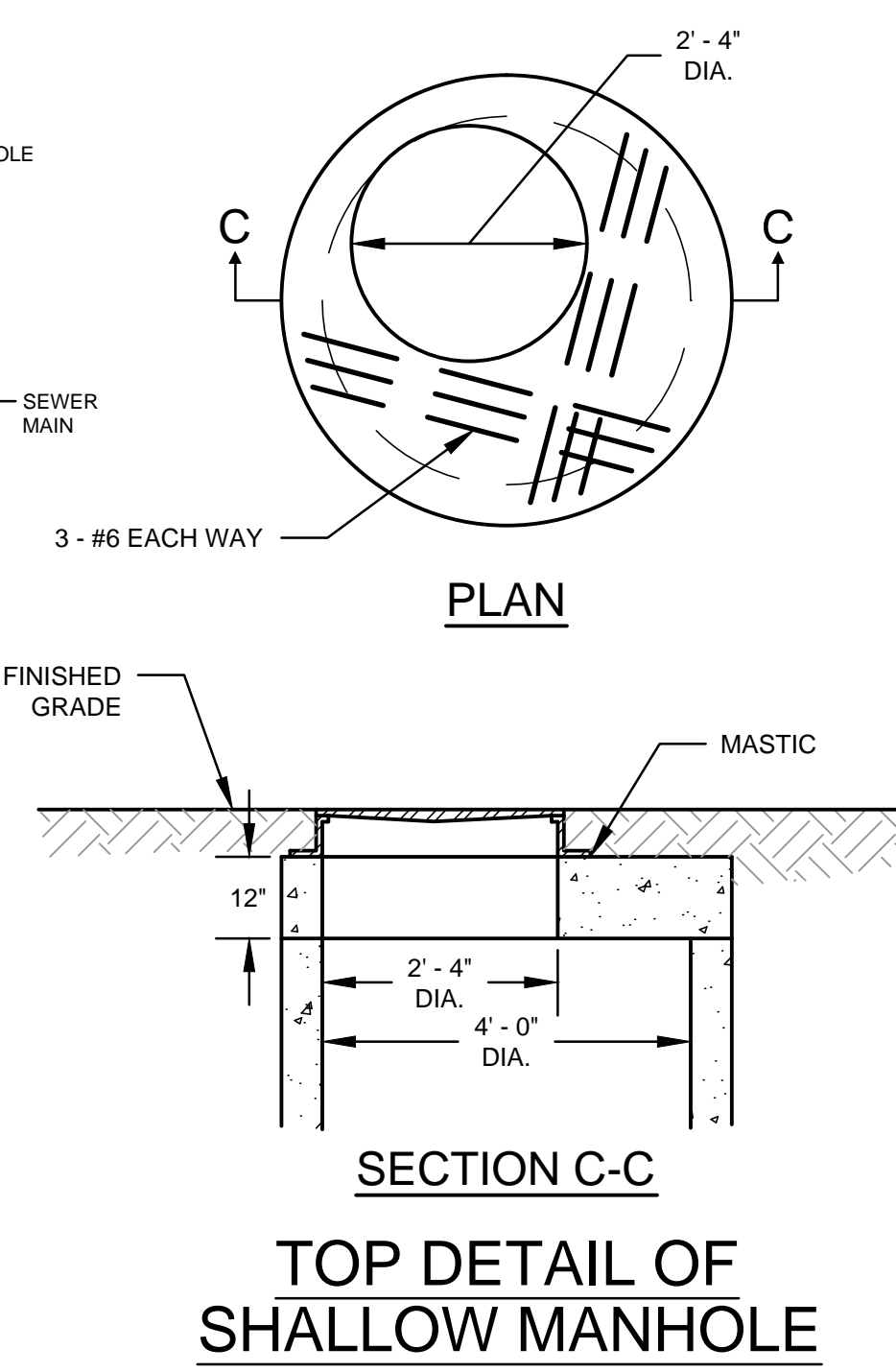
**TYPICAL MANHOLE DETAIL**



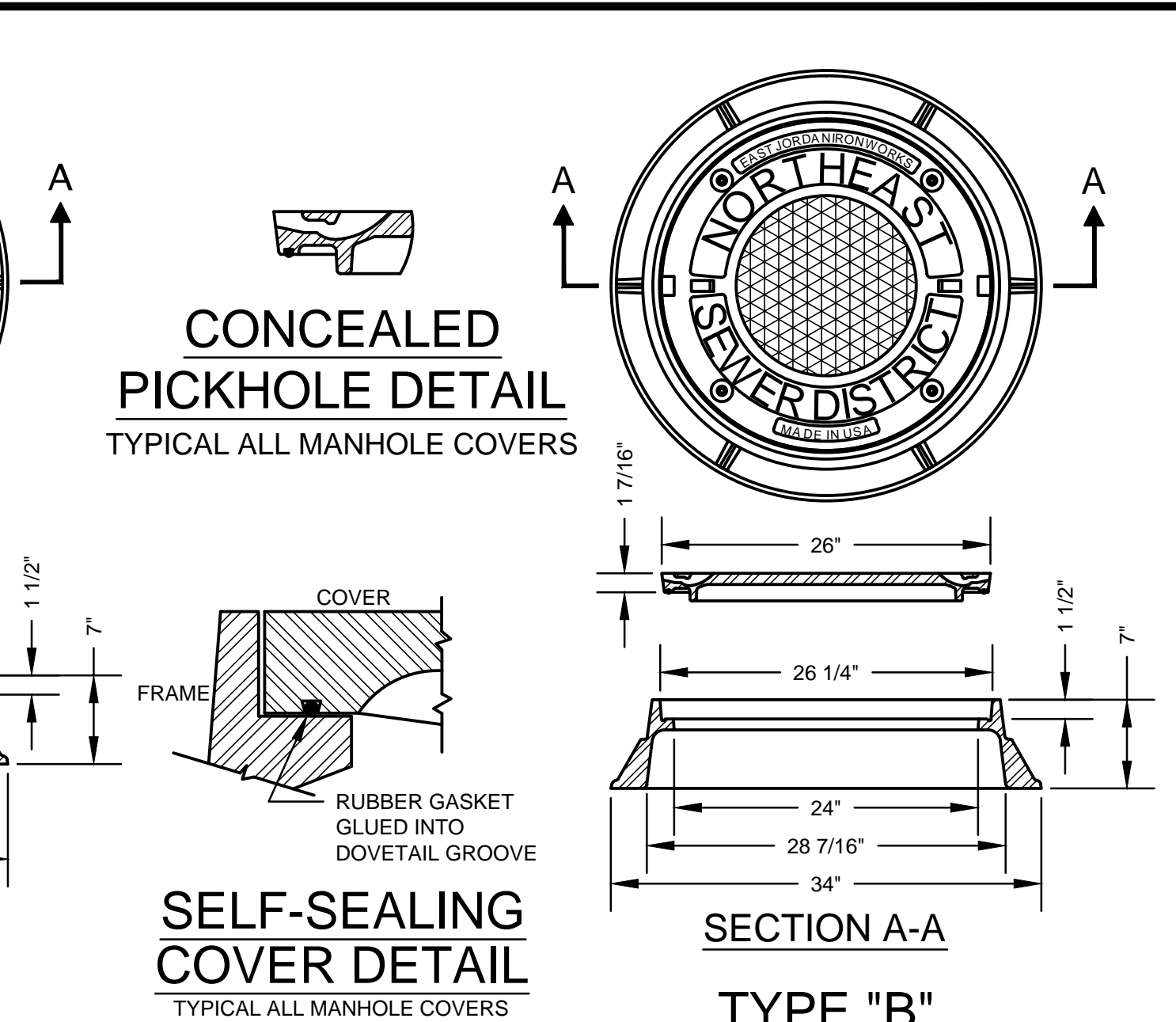
**DROP MANHOLE CONNECTION**



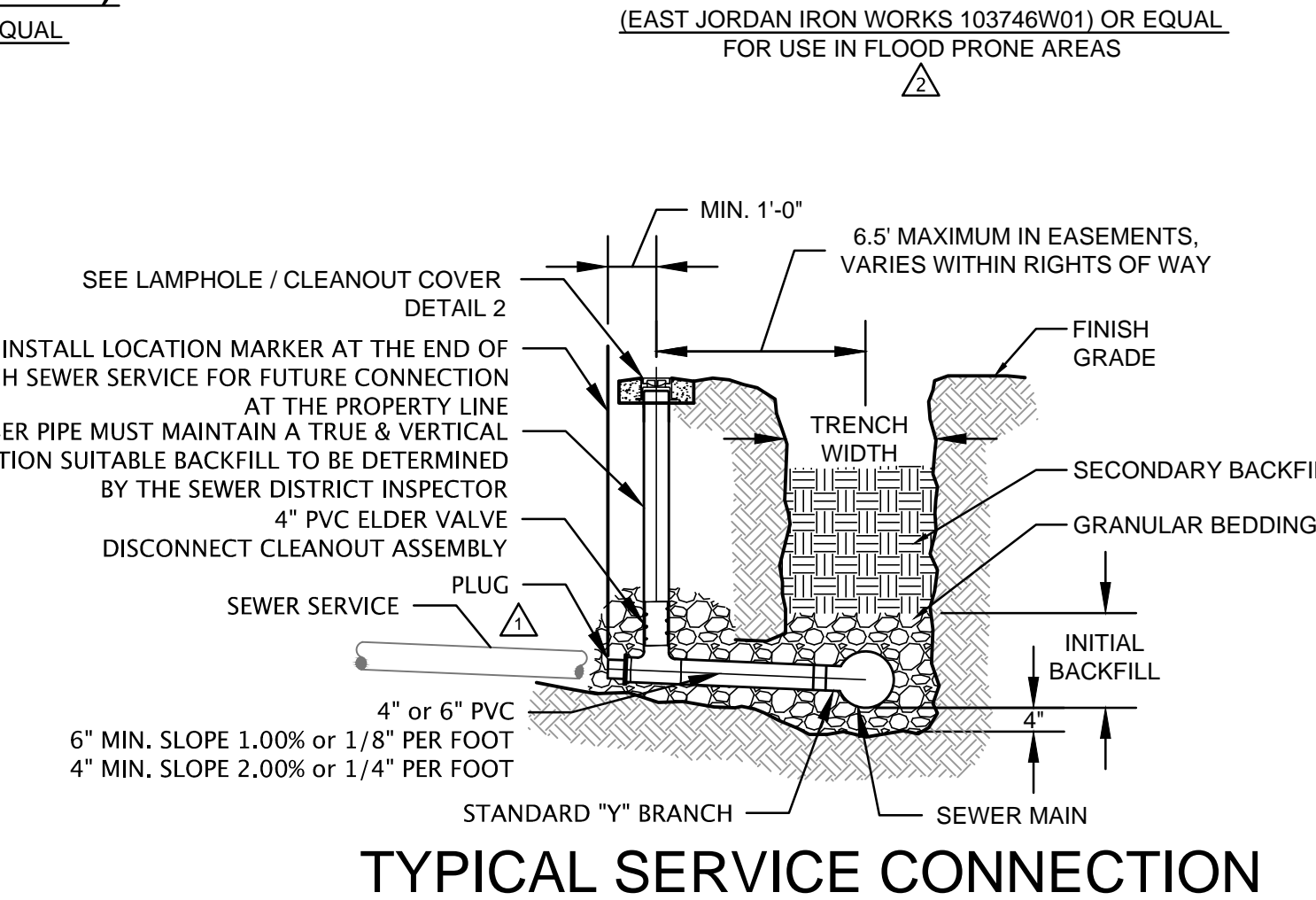
**LAMPHOLE**



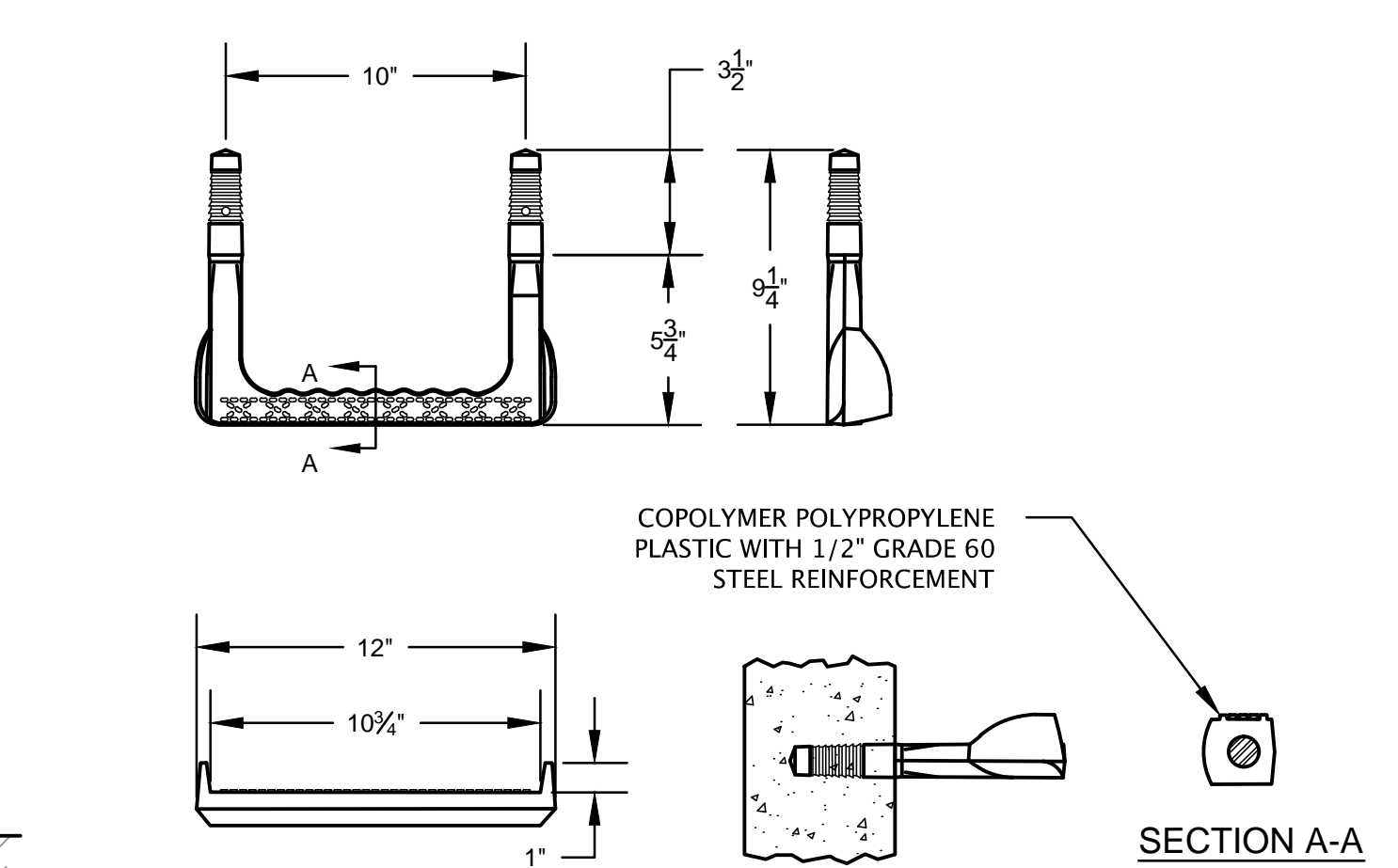
**TOP DETAIL OF SHALLOW MANHOLE**



**CONCEALED PICKHOLE DETAIL**  
**SELF-SEALING COVER DETAIL**



**TYPICAL SERVICE CONNECTION**



**MANHOLE STEPS**

**GENERAL NOTES:**

THESE STANDARD DETAILS ARE TO BE CONSIDERED THE GRAPHIC PRESENTATION OF INFORMATION CONTAINED IN THE DISTRICT STANDARD SPECIFICATIONS, ESPECIALLY SECTION 02221-TRENCHING, BACKFILLING AND COMPACTION, AND SECTION 02722-GRAVITY SANITARY SEWERS. USE OF THIS DRAWING WITHOUT THE REFERENCED SPECIFICATIONS MAY CAUSE THE CONTRACTOR DELAY AND ADDITIONAL EXPENSE.

THE ENGINEER SHALL PROVIDE THE DISTRICT "AS CONSTRUCTED DRAWINGS" AFTER THE COMPLETION OF THE PROJECT, INCLUDING ALL SERVICE CONNECTION LOCATIONS.