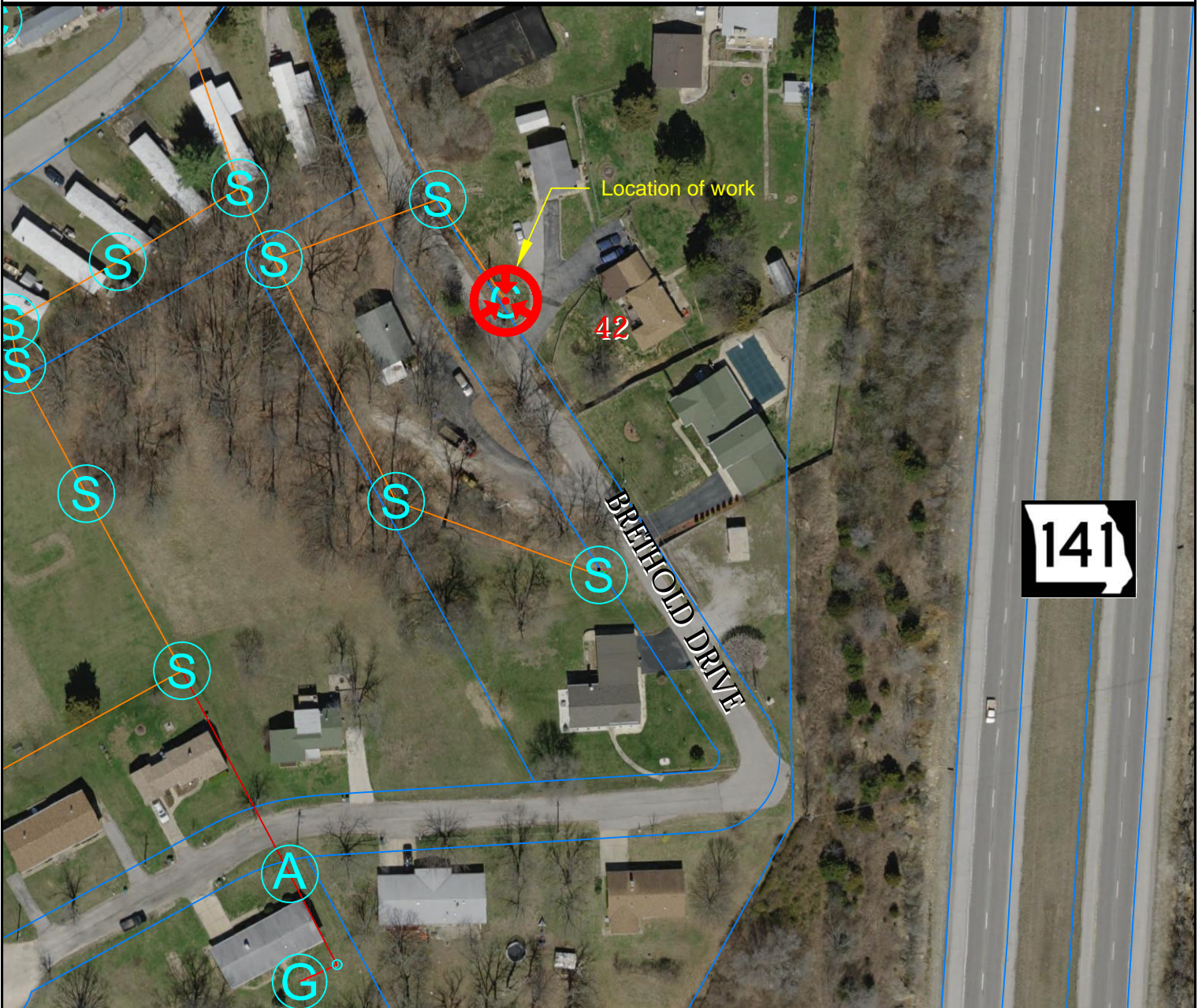


# PROJECT & IMPROVEMENT NOTICE

DESCRIPTION OF WORK: REPLACE LAMPHOLE WITH A MANHOLE.

CONTACT: Eric Kohm  
 636-343-5090 ext. 227 office  
 314-305-4829 cell  
 erick@northeastsewer.org



## NPSD FACILITIES MAP

- |  |                        |  |                   |
|--|------------------------|--|-------------------|
|  | Existing Gravity Sewer |  | Outfall Sewer     |
|  | Existing Forcemain     |  | Air Release Valve |
|  | Proposed Gravity Sewer |  | Grinder Pump      |
|  | Mapped Manhole (Plans) |  | Junction          |
|  | Located Manhole (R-10) |  | Valve             |
|  | Proposed Manhole       |  | Valve Vault       |
|  | Buried or Not Found    |  | Pump              |



**NORTH**

Scale: 1" = 100'

Date: 02-25-2021



**NORTHEAST**  
 PUBLIC SEWER DISTRICT

1041 GRAVOIS ROAD | FENTON, MISSOURI 63026 | 636-343-5090 | www.northeastsewer.org