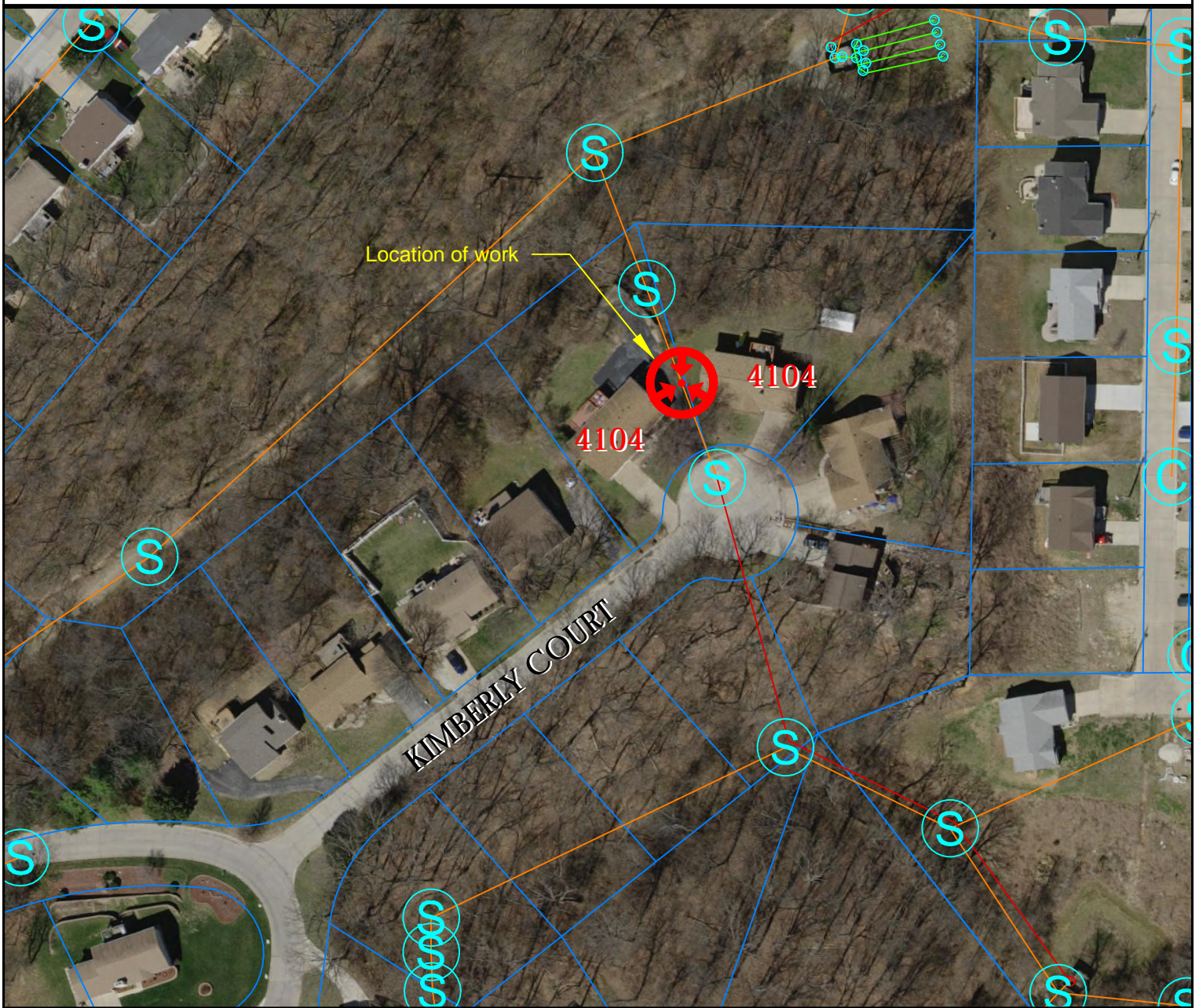


PROJECT & IMPROVEMENT NOTICE

DESCRIPTION OF WORK: REPAIR OF PARTIAL COLLAPSE, POOR TAP AND DEFECT IN THE FLOWLINE OF SEWER MAIN TO ELIMINATE INFILTRATION / INFLOW AND ROOT INTRUSION, AND PROVIDED SERVICE RELIABILITY. WORK MAY AFFECT ASPHALT DRIVEWAY AT 4104 KIMBERLY COURT.

CONTACT: Chuck Drinen
 636-343-5090 EXT. 229
 314-568-8125 cell
 chuckd@northeastsewer.org



NPSD FACILITIES MAP

- | | | | | |
|--|------------------------|--|-------|-------------------|
| | Existing Gravity Sewer | | | Outfall Sewer |
| | Existing Forcemain | | | Air Release Valve |
| | Proposed Gravity Sewer | | | Grinder Pump |
| | | | | Junction |
| | Mapped Manhole (Plans) | | | Valve |
| | Located Manhole (R-10) | | | Valve Vault |
| | Proposed Manhole | | | Pump |
| | Buried or Not Found | | | |



NORTH

Scale: 1" = 100'

Date: 06-30-2021



NORTHEAST
PUBLIC SEWER DISTRICT

1041 GRAVOIS ROAD | FENTON, MISSOURI 63026 | 636-343-5090 | www.northeastsewer.org