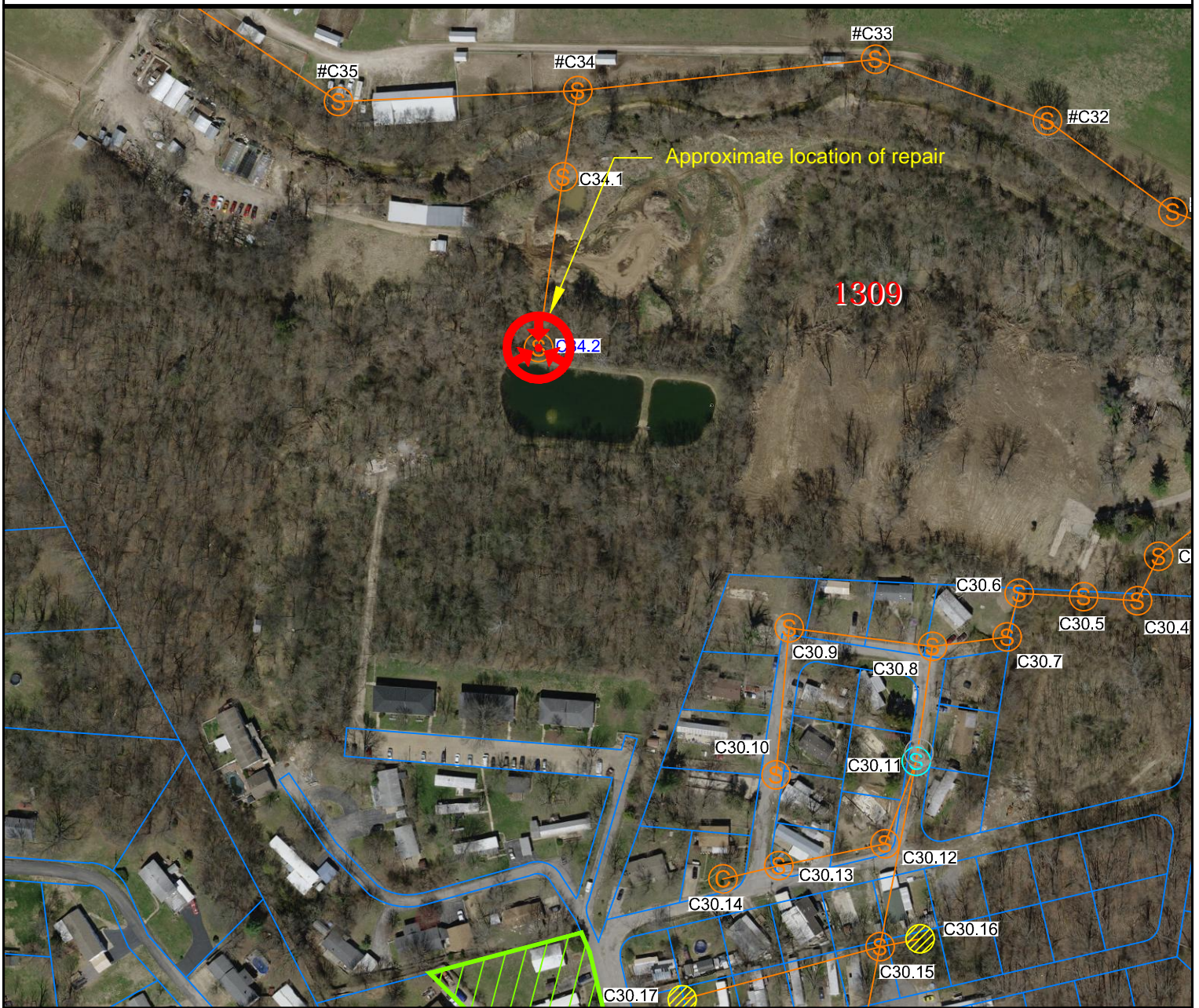


# PROJECT & IMPROVEMENT NOTICE

DESCRIPTION OF WORK: RAISE BURIED MANHOLE TO GRADE.

CONTACT: Tim Stockwell  
 636-343-8838 ext. 255 office  
 314-581-0490 cell  
 tims@northeastsewer.org



## NPSD FACILITIES MAP

- |  |                        |  |                   |
|--|------------------------|--|-------------------|
|  | Existing Gravity Sewer |  | Outfall Sewer     |
|  | Existing Forcemain     |  | Air Release Valve |
|  | Proposed Gravity Sewer |  | Grinder Pump      |
|  | Mapped Manhole (Plans) |  | Junction          |
|  | Located Manhole (R-10) |  | Valve             |
|  | Proposed Manhole       |  | Valve Vault       |
|  | Buried or Not Found    |  | Pump              |



Scale: 1" = 200'

Date: 02-05-2021



**NORTHEAST**  
PUBLIC SEWER DISTRICT

1041 GRAVOIS ROAD | FENTON, MISSOURI 63026 | 636-343-5090 | www.northeastsewer.org